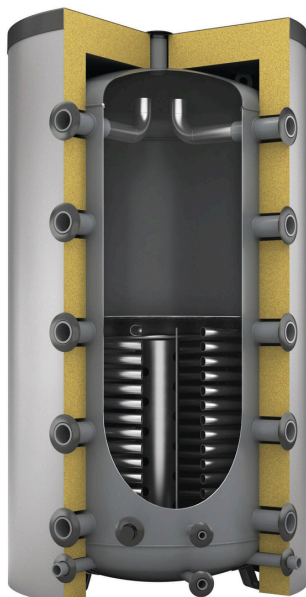


Storaflow Heat SH 500 H/F/1_C, Buffer tank for storing heating water, grey, 4 bar

Article number: 7938000



Thinking solutions.



Features

Type	SH 500 H/F/1_C
Colour	grey
Insulation type	foil jacket
Insulation strength	120 mm
Energy efficiency class	C
Nominal capacity	460 l
Rated content corrugated pipe	12 l
Number of sleeves	12 St.
Operating temperature	5 – 95 °C
Perm. operating temperature heat exchanger	110 °C
Max. perm. operating pressure	4 bar
Perm. operating pressure heat exchanger	10 bar
Operating pressure	1 – 4 bar
Connection sleeve/flange	Rp 2"
Anschluss Flansch EFHR (berechnet)	DN110
Connection heat surface(s)	R 1 1/4"
Connection flow/return	G 1 1/4"
Heating surface top	1.89 m ²
Diameter	840 mm
Diameter without insulation	597 mm
Height	1970 mm
Height without insul.	1918 mm
Tilt dimension approx.	1960 mm
Weight	136.00 kg

Description

Storaflow Heat

Buffer tank for storing heating water. Particularly suitable for use in conjunction with a fresh water station from the Reflex Hydroflow series and Sinus heating circuit manifolds. Versions with flange and an internal heat exchanger for integrating external energy sources.

The 2-inch connection socket rows for heat generators and consumers are arranged vertically, offset by 90°, as charging and discharging sockets, 5 on each side, with an additional 2-inch connection in the centre. There are also vertically arranged screw-in options for sensor sleeves, thermometers etc. between these connection socket rows (4 x Rp 1/2). Parallel to the 2 inch connections, there is also a 1 1/4 inch connection piece on each side for return stratification in conjunction with a perforated internal stratification pipe. The internal stratified separating sheet in accordance with DIN 24041. An Rp 3/4 inch connection in the base of the tank for filling and draining. Tanks with bare-tube exchangers also have flow and return connectors to the tube bundle heating surface.

Storage tank of steel S235JR+AR, inside uncoated and outside corrosion protected.

Buffer tank up to 800 litres insulated with removable 120mm jacket and cover insulation, 1,000 - 2,000 litres with removable 150mm jacket and 120mm cover insulation, as well as 100mm base insulation. Tanks up to 2000 litres are supplied ready-insulated. Tanks greater than 3000 litres are transported horizontally, without insulation. Insulation must be ordered separately. Hot water storage tanks are equipped with loops on the tank lid. Tank available in energy efficiency class C.

The heat losses are measured on an externally certified test bed.