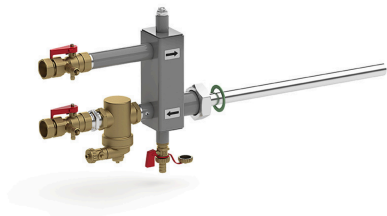


# SINUS EasyFixx Connection box with single-side predefined 2x1" connections, including cap valves for direct connection of a Variomat, Reflexomat or a Servitec.



Article number: 620228/



## Features

Type	EasyFixx
Operating temperature	-10 °C - 110 °C
Operating pressure	0 bar - 6 bar
Weight	4,46 kg

## Description

Connection box with predefined 2x1" connections on one side, incl. cap valves, for direct connection of a Variomat, Reflexomat or Servitec. Manifold side with 2" double pipe connection for direct connection to a compact manifold, HydroFixx (manifold with integrated hydraulic separator), single-chamber manifold or buffer cylinder while maintaining the minimum distance of 500 mm. Including sludge and magnetite separator integrated in the supply line to ensure the functionality of the components for pressure maintenance and degassing. Sludge and magnetite separator as a fitting for removing particles up to a size of 5.0 micrometers from the liquid flow with a specially designed insert and a high-energy permanent magnet. Additional sleeves for venting/draining the connection box. Including vent plug and drain cock.