

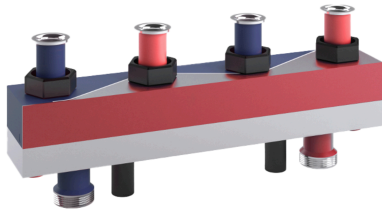
SINUS HydroFixx-set 80/80, 2 heating circuits, 125 mm nozzle separation, 4 bar, 110 °C

Article number: 4200041



Thinking solutions.

Features



Type	80/80
Material	S 235 JR
Distributor content	2,5 L/lfdm
Number of connecting pieces	6 St.
Operating temperature	-10 °C - 110 °C
Operating pressure	0 bar - 4 bar
Connection, consumer circuit	G 1 1/2" coupling nut
Connection, generator circuit	G 1 1/2"
Max. volume flow	3,0 m³/h
Output at ΔT 20 °K	70,00 kW
Chamber size	80/80
Length, manifold chamber	460 mm
Wall thickness	2,5 mm
Connection separation (type of connection spacing)	uniform
Connection separation (axis separation of the outlets on the manifold)	125 mm
Weight	7,12 kg

Description

Combined flow and return manifold, comprising rectangular tube with chambers arranged in parallel and separated by a sinusoidal separating wall with horizontally welded hydraulic separator directly below. Ensures optimum hydraulic decoupling of the various primary and secondary circuits under all operating conditions. No interacting pumps at partial and full load. Can also be used with several different heat generators or chillers. Produced from black steel sheet S235.

The boiler connection is made from below and the respective heating circuits are connected from above in a space-saving and clear manner.

The manifold is provided with appropriate 1/2" sleeves in the factory for connection of temperature sensors.

The component is checked for 100% leak-tightness and primed in the factory.

Packed as a SET including EPP heat insulation. The heat insulation complies with the German Building Energy Act (GEG). Sinus HydroFixx and small manifolds Type 80/60 delivered including wall-mounting.