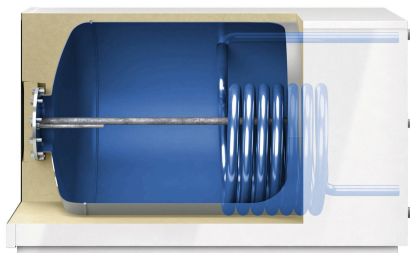


# Storatherm Aqua Compact AC 250/1\_B, base tank with steel sheet jacket, white, 10 bar

Article number: 7862900



## Features

Type	AC 250/1_B
Colour	white
Insulation type	steel sheet jacket
Insulation strength	21 mm
Energy efficiency class	B
Nominal capacity	241 l
Rated content corrugated pipe	7 l
Built acc. to	EN 12897
Number of sleeves	1 St.
Operating temperature	95 °C
Perm. operating temperature heat exchanger	110 °C
Max. perm. operating pressure	10 bar
Perm. operating pressure heat exchanger	10 bar
Operating pressure	10 bar
Connection sleeve/flange	DN110
Drinking water connection	R 1"
Connection heat surface(s)	R 1"
Circulation connection	R 3/4"
Connection cold/hot water	R 1"
Connection flow/return	R 1"
Conventional NL coefficient	7,6
Heat maintaining losses	61 W
Heating surface top	0,87 m²
Diameter without insulation	597 mm
Height	642 mm
Width	653 mm
Depth	1120 mm
Tilt dimension approx.	1414 mm
Weight	114,00 kg

## Description

### Storatherm Aqua Compact

Hot water tank for indirect domestic hot water heating in a horizontal or upright version with an internal heat exchanger.

Storage tank of steel S235JR+AR, designed according to DIN EN 12897 and the Pressure Equipment Directive 2014/68/EU. Enamelling for hygienic perfect drinking water is performed according to DIN 4753 T3.

DHW tank up to 500 litre insulated with non-removable highly efficient insulation system according to DIN 4102-1 material class B2; DHW tank > 500 to 1000 litre insulated with 100mm; DHW tank > 1000 litre with 120mm removable fleece insulation, according to DIN 4102-1 material class B2.

Drinking water tank up to 500 litres available in energy efficiency classes B and C. DHW tank > 500 litres only available in energy efficiency class C.

The heat losses are measured on an externally certified test bed.