

**reflex**

Thinking solutions.

Operation & maintenance

Vacuum spray tube degassing

Type Servitec 35-95

reflex+
experts No.**M82**

Maintenance plan* 1/2

Check Maintain Clean

Interval: Yearly

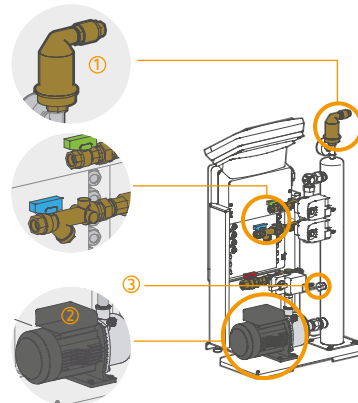
Checking the parameters

- Check operating mode — Magcontrol or Levelcontrol
- Check the setting of the minimum operating pressure p_0 and the safety valve actuating pressure p_{sv} in Magcontrol mode
- **Note:** If a Fillsoft I or II water treatment system is used, replace the cartridge(s). The cartridge(s) must be replaced after 18 months at the latest or can be replaced as part of the annual maintenance.
- **Important!** Reset the soft water capacity in the Replenish menu
- Read out fault store and parameter history, analyse, document and reset if necessary

Check the leak tightness and function of the system components

Interval: Yearly

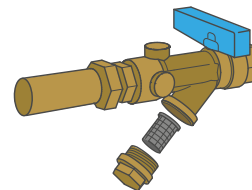
- Check the function of the quick air vent ① (Reflex Exvoid T) with suck-back protection
- The quick air vent must not suck in any air, i.e. it must be vacuum-tight! (see also vacuum test)
- Check screw connections and if leaking, retighten.
- Check pump ② for function and tightness.
- Check low water switch ③ for function
 - Close the inlet (blue-coloured ball valve) and start degassing until the low water switch is activated and switches.
 - Pump is switched off immediately to protect against cavitation and dry running.
 - If the pump does not switch off and the low water level error occurs, clean/check the low water level switch and replace if necessary.



Cleaning components

Interval: Yearly

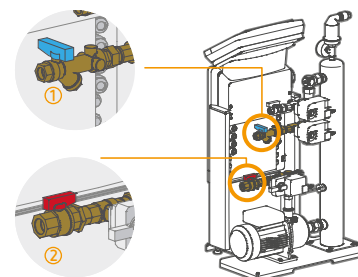
- Shut off the blue-coloured ball valve and open the strainer.
- Remove, clean and reinsert the filter element. Always replace or reinsert a defective or missing filter element.
- Close the strainer and open the ball valve again.
- If the filter insert is heavily dirty or missing, the injection nozzle in the vacuum spray tube should also be cleaned. A missing filter insert in the strainer must be replaced.



Vacuum test

Interval: Yearly

- Close the blue ball valve ①, the red ball valve ② remains open. Generate a vacuum in manual mode using the following functions:
 - Control Basic: Select system degassing **SE**
 - Control Touch: Activate **circulation** function
- If the vacuum gauge indicates a vacuum of min. -0.7 bar, deactivate degassing with **STOP**.
- The vacuum must be constant for min. 10 minutes
- **Tips and tricks:** To check, pull a balloon over the quick air vent — the balloon must not contract or be sucked into the quick air vent.





Thinking solutions.

Operation & maintenance

Vacuum spray tube degassing

Type Servitec 35-95

reflex+
experts No.

M83

Basics

Function

Operation & Maintenance

Maintenance plan* 2/2

Check Maintain Clean

Function check

Interval: Yearly

- Checking the function in manual mode

Reflex Control Basic

Check system degassing — select **SE**

Check water make-up degassing — select **NE**

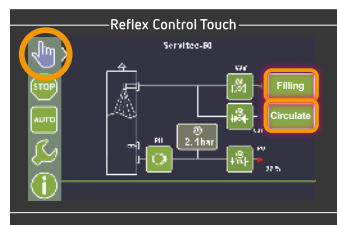


Check the automatic water make-up degassing by manual operation by activating **WV** on pressurization maintenance system

Reflex Control Touch

Check system degassing — activate **Circulate**

Check water make-up degassing — activate **Filling**



Check the automatic water make-up degassing by manual operation by activating **WV** on pressurization maintenance system

For Control Touch:

- At the completion of each maintenance, confirm the **maintenance interval** parameter in the customer menu (007) with **OK** so that the timer starts again and therefore no message is displayed

Tips and Tricks:

Pull a balloon over the **DV** quick air vent, then run through one (or more) degassing cycle(s)
Balloon is blown up by the vented gases → System OK

Further information and aids

Spare parts	Art. No.
Low-water switch	9125906
Quick air vent	8826615
Dirt filter	7997069

Spare parts service

Our spare parts service helps you to quickly obtain the right parts and minimises delays and downtimes.

More information:
www.reflex-winkelmann.com/en/services/after-sales-and-service/spare-parts



Function Servitec

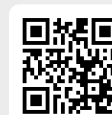
Further information about the function of the Servitec:
→ Expert cards F20 and F21

Films on the function can be found at

www.reflex-winkelmann.com/en/services/documents-and-videos

Installation and operating manual

for detailed instructions:



Servitec 35-95
Control Basic



Servitec 35-95
Control Touch

Digital commissioning & maintenance checklist:

Checklist as an online form or as a PDF form for download:
www.reflex4experts.com/en/downloads

