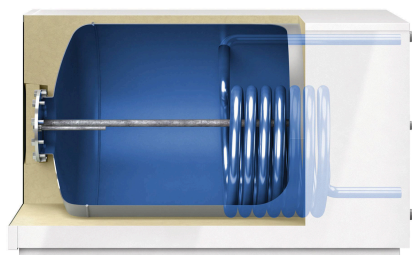


Storatherm Aqua Compact AC 150/1_B, base tank with steel sheet jacket, white, 10 bar

Article number: 7862800



Features

Type	AC 150/1_B
Colour	white
Insulation type	steel sheet jacket
Insulation strength	52 mm
Energy efficiency class	B
Nominal capacity	147 l
Rated content corrugated pipe	6 l
Built acc. to	EN 12897
Number of sleeves	1 St.
Operating temperature	95 °C
Perm. operating temperature heat exchanger	110 °C
Max. perm. operating pressure	10 bar
Perm. operating pressure heat exchanger	10 bar
Operating pressure	10 bar
Connection sleeve/flange	DN110
Drinking water connection	R 1"
Connection heat surface(s)	R 3/4"
Circulation connection	R 3/4"
Connection cold/hot water	R 1"
Connection flow/return	R 3/4"
Conventional NL coefficient	3,6
Heat maintaining losses	41 W
Heating surface top	0,89 m²
Diameter without insulation	500 mm
Height	590 mm
Width	620 mm
Depth	1031 mm
Tilt dimension approx.	1300 mm
Weight	85,00 kg

Description

Storatherm Aqua Compact

Hot water tank for indirect domestic hot water heating in a horizontal or upright version with an internal heat exchanger.

Storage tank of steel S235JR+AR, designed according to DIN EN 12897 and the Pressure Equipment Directive 2014/68/EU. Enamelling for hygienic perfect drinking water is performed according to DIN 4753 T3.

DHW tank up to 500 litre insulated with non-removable highly efficient insulation system according to DIN 4102-1 material class B2; DHW tank > 500 to 1000 litre insulated with 100mm; DHW tank > 1000 litre with 120mm removable fleece insulation, according to DIN 4102-1 material class B2.

Drinking water tank up to 500 litres available in energy efficiency classes B and C. DHW tank > 500 litres only available in energy efficiency class C.

The heat losses are measured on an externally certified test bed.