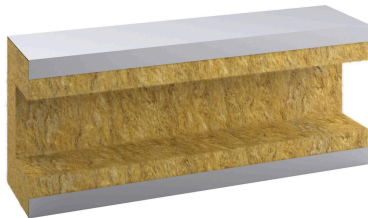


insulation for SINUS HydroFixx 160/160, 100 mm mineral wool, galvanised sheet steel jacket

Article number: 4203196



Thinking solutions.



Features

Type	160/160
Insulation strength	100 mm
Insulation material	mineral wool
Insulation material fire protection class according to DIN 4102	A1
Outer jacket fire protection class according to DIN 4102	A1
Outer material	galvanised sheet steel jacket
Thermal conductivity	0,038 W/m*K
Max. ambient temperature	130 °C
Connection separation (type of connection spacing)	variable

Description

Thermal insulation comprising interlocking half shells with end-pieces. Customised and precisely fitting cut-outs for all connection nozzles are provided in the factory. The half shells are fitted using stainless-steel clamping straps and quick-release fasteners. This enables simple assembly and disassembly for overhaul purposes.

The insulation thickness complies with the current building regulations (GEG). The insulation is not diffusion-tight.